

# **NESLAB System IV Liquid to Liquid Heat Exchanger**

Thermo Manual P/N U00682  
Rev. 11/10/03

## **Instruction and Operation Manual**



# System IV Liquid to Liquid Heat Exchanger Instruction and Operation Manual

## Table of Contents

<b>PREFACE</b>	
	Compliance ..... 3
	After-sale Support ..... 3
	Warranty ..... 3
	NES-care ..... 3
	Unpacking ..... 3
<b>SECTION I</b>	
<b>Safety</b>	
	Warnings ..... 4
<b>SECTION II</b>	
<b>General Information</b>	
	Description ..... 5
	Specifications ..... 5
<b>SECTION III</b>	
<b>Installation</b>	
	Site ..... 6
	Facility Water Requirements ..... 6
	Electrical Requirements ..... 7
	Voltage Selection ..... 7
	Plumbing Requirements ..... 7
	Fluids ..... 8
	Filling Requirements ..... 9
	Auto Refill Device (Optional) ..... 9
	Flow Control ..... 9
	Auto Restart ..... 9
<b>SECTION IV</b>	
<b>Operation</b>	
	Start Up ..... 10
	Temperature Controller ..... 11
	Tune Loop ..... 12

**SECTION V  
Maintenance & Service**

Service Contracts .....	13
Facility Water Strainer .....	13
Algae .....	13
Configuration .....	13
Voltage Selection .....	14
External Interlock Contact .....	14
Fuses .....	14
Phase Rotation .....	14
Pump Motor Overload Protector .....	15
Displaying Software Version .....	15

**SECTION VI  
Troubleshooting**

Error Codes .....	16
Service Assistance .....	17
Technical Support .....	17

**SECTION VII  
Diagrams**

Flow Diagram .....	18
Rear View .....	19

**APPENDIX**

Water Quality Standards and Recommendations .....	20
---	----

**SECTION VIII  
Warranty**

.....	21
-------	----

## Preface

### Compliance

Products tested and found to be in compliance with the requirements defined in the EMC standards defined by 89/336/EEC as well as Low Voltage Directive (LVD) 73/23/EEC can be identified by the CE label on the rear of the unit. This label indicates testing has demonstrated compliance with the following directives:

LVD, 73/23/EEC	Complies with UL 3101-1:93
EMC, 89/336/EEC	EN 55011, Class A Verification
	EN 50082-1:1992
	IEC 1000-4-2:1995
	IEC 1000-4-3:1994
	IEC 1000-4-4:1995

For any additional information refer to the Letter of Compliance that shipped with the unit (Declaration of Conformity).

### After-sale Support

Thermo Electron Corporation is committed to customer service both during and after the sale. If you have questions concerning the operation of your unit, contact our Sales Department. If your unit fails to operate properly, or if you have questions concerning spare parts or Service Contracts, contact our Service Department, see back cover. Before calling, *please* obtain the following information from the unit's serial number label on the rear of the unit:

- *BOM number* \_\_\_\_\_

- *Serial number* \_\_\_\_\_

### Warranty

Units have a warranty against defective parts and workmanship for one full year from date of shipment. See back page for more details.

### ***NES-care* Extended Warranty Contract**

- Extend parts and labor coverage for an additional year.
  - Worry-free operation.
  - Control service costs.
  - Eliminate the need to generate repair orders.
  - No unexpected repair costs.
- Other contract options are available. Please contact us for more information.

### Unpacking

Retain all cartons and packing material until the unit is operated and found to be in good condition. If the unit shows external or internal damage contact the transportation company and file a damage claim. Under ICC regulations, this is your responsibility.

## Section I Safety

### Warnings

Make sure you read and understand all instructions and safety precautions listed in this manual before installing or operating your unit. If you have any questions concerning the operation of your unit or the information in this manual, contact our Sales Department (see After-sale Support).

Performance of installation, operation, or maintenance procedures other than those described in this manual may result in a hazardous situation and may void the manufacturer's warranty.

**Observe all warning labels.**

**Never remove warning labels.**

**Never operate damaged or leaking equipment.**

**Never operate the unit without cooling fluid in the reservoir.**

**Always turn off the unit and disconnect the line cord from the power source before performing any service or maintenance procedures, or before moving the unit.**

**Always empty the reservoir before moving the unit.**

**Never operate equipment with damaged line cords.**

**Refer service and repairs to a qualified technician.**



In addition to the safety warnings listed above, warnings are posted throughout the manual. These warnings are designated by an exclamation mark inside an equilateral triangle with text highlighted in bold print. Read and follow these important instructions. Failure to observe these instructions can result in permanent damage to the unit, significant property damage, or personal injury or death.

## Section II General Information

### Description

The NESLAB System IV Liquid to Liquid Heat Exchanger is designed to remove heat from water-cooled instruments.

The unit consists of a heat exchanger, recirculation pump, stainless steel reservoir and a microprocessor temperature controller.

### Specifications

**Temperature Range**  
**Temperature Stability**  
**Cooling Capacity<sup>1</sup>**

	<b>+5°C to +40°C</b>
	<b>±1.0°C</b>
<b>Pumping Capacity<sup>2</sup></b>	<b>50 gpm at 60 psi</b>
<b>Reservoir Volume</b> <i>Gallons</i> <i>Liters</i>	<b>6.5</b> <b>24.6</b>
<b>Unit Dimensions<sup>3</sup></b> <i>(H x W x D)</i> <i>Inches</i> <i>Centimeters</i>	<b>33¾ x 23.0 x 27.0</b> <b>85.7 x 58.4 x 68.6</b>

1. Cooling capacity based on a 10°C difference between the temperature of the cooling water supply and a 35 gpm process water flow rate; using a 3 horsepower centrifugal pump and 55 psi tap water pressure.
2. CP 100 pump, customizing options available.
3. Additional dimensions are shown on page 19.

## Section III Installation

### Site

The unit should be placed in a laboratory or clean industrial environment with easy access to a facility cooling water and a drain.

### Facility Water Requirements



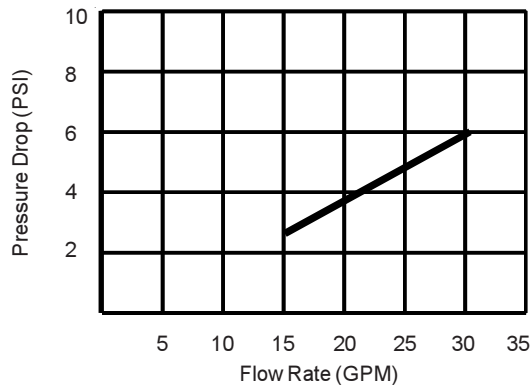
**Limit the facility water inlet pressure to less than 150 psi (10,2 Bar) and limit the facility water inlet pressure to outlet pressure differential across the System IV to less than 35 psid (2,4 Bar).**

Refer to the Cooling Capacity chart in Section II, Specifications. The flow rate of the cooling water supply must meet or exceed these requirements for the unit to operate at its full rated capacity. If the cooling water does meet these standards, the cooling capacity will be derated. The chart is based on a 10°C difference between the temperature of the cooling water supply and the process fluid entering the instrument being cooled.

As the heat load increases, the required flow rate of the cooling water supply increases. For example, if the heat load is 60 kilowatts, only 20 gallons per minute is required to remove the heat. However, if the heat load is 80 kilowatts, 26 gallons per minute is required.

The flow meter on the front of the unit does not measure the flow rate of the cooling water supply. The flow meter measures the flow rate of the cooling fluid returning to the instrument being cooled.

The approximate facility side water pressure drop through the unit is shown on the graph below.



## Electrical Requirements



The unit construction provides protection against the risk of electric shock by grounding appropriate metal parts . The protection may not function unless the power cord is connected to a properly grounded outlet. It is the user's responsibility to assure a proper ground connection is provided.

Refer to the serial number label on the rear of the unit to identify the specific electrical requirements of your unit.

Make sure the voltage of the power source meets the specified voltage,  $\pm 10\%$ .

## Voltage Selection

If the unit is to be operated from a 220 to 240 volt source, a voltage selector inside the unit must be reset. See Section VII, Service for instructions on changing the voltage selection.

## Plumbing Requirements

The plumbing connections are located on the rear of the unit and are labelled FACILITY WATER and RECIRCULATING WATER. FACILITY WATER connections are 1 inch nominal FPT. RECIRCULATING WATER connections are 1½ inch nominal FPT. See illustration on page 19.

Before installing the unit to an instrument that previously used tap water as a cooling fluid, flush the instrument several times to remove any rust or scale that has built up. The manufacturer of the instrument should be able to recommend a cleaning fluid for their equipment.

Connect the FACILITY WATER SUPPLY to the cooling water source.  
Connect the FACILITY WATER RETURN to the drain.

Connect the RECIRCULATING WATER SUPPLY to the inlet of the instrument being cooled. Connect the RECIRCULATING WATER RETURN to the outlet of the instrument being cooled.

Flexible tubing, if used, should be of heavy wall or reinforced construction. All tubing should be rated to withstand 80 psi at +40°C. Make sure all tubing connections are securely clamped. Avoid running tubing near radiators, hot water pipes, etc. If substantial lengths of tubing are necessary, insulation may be required to prevent loss of cooling capacity.

Tubing and insulation are available from Thermo. Contact our Sales Department for more information (see Preface, After-sale Support).



It is important to keep the distance between the unit and the instrument being cooled as short as possible, and to use the largest diameter tubing practical. Tubing should be straight and without bends. If reductions must be made, they should be made at the inlet and outlet of the instrument being cooled, not at the unit.

If substantial lengths of cooling lines are required, they should be pre-filled with cooling fluid before connecting them to the unit.

## Fluids



**Never use flammable or corrosive fluids with this unit. Do not use automotive anti-freeze. Commercial anti-freeze contains silicates that can damage the pump seals. Use of automotive anti-freeze will void the manufacturer's warranty.**

We recommend using distilled/deionized water with a 0.05 to 0.1 megohm-cm reading.



**Highly distilled/deionized water, above the 3 megohm-cm region, may become aggressive and is not recommended for use with units with wetted parts other than stainless steel. Distilled/deionized water in the 15 megohm-cm region is definitely aggressive and should not be used. Units operating in these regions should be closely monitored. See Water Quality Standards and Recommendations in the Appendix.**

If you do not have access to distilled/deionized water we recommend using filtered tap water. Thermo cannot recommend any custom fluids, these fluids are too dependent on your particular application.

Below +8°C, a non-freezing solution is required. The selected cooling fluid must have a viscosity of 50 centistokes or less. A 50/50 mixture, by volume, of distilled/deionized water and laboratory grade ethylene glycol is suggested.

## Filling Requirements

Remove the top access panel and locate the reservoir. Fill the reservoir with cooling fluid to within one inch of the top. Since the reservoir capacity is small compared to the volume of the circulating system, keep extra cooling fluid on hand until the circulating system is full.

## Auto Refill Device (Optional)

The automatic refill device maintains the correct level of cooling fluid in the reservoir. The device consists of a float switch in the reservoir and a solenoid valve at the rear of the unit. If the cooling fluid level falls, the float switch will drop, opening the solenoid valve and allowing make-up fluid to fill the reservoir. Once the cooling fluid reaches the proper level, the float switch will rise and the solenoid valve will close.

**NOTE:** For the solenoid valve to close properly, the minimum supply flow rate should be 2.2 gallons per minute.

Connect the  $\frac{3}{8}$  inch OD stainless steel barbed fitting on the solenoid valve to the make-up fluid source using  $\frac{5}{16}$  or  $\frac{3}{8}$  inch ID flexible tubing.

Tubing is available from Thermo. Contact our Sales Department for more information (see Preface, After-sale Support).

## Flow Control

The RECIRCULATING FLOW CONTROL handle is connected to a three-way valve that controls the flow of the cooling fluid to the instrument being cooled. The handle is located on the front of the unit.

When the handle is in the "+" position, the valve is open and all available cooling fluid is supplied to the instrument being cooled. When the handle is in the "0" position, the valve is closed and no cooling fluid is supplied to the instrument being cooled. When the handle is between these two positions, the flow rate of the cooling fluid is between full flow and no flow. Use the flow meter to adjust the desired flow rate.

The gauge next to the flow control handle indicates the operating pressure.

## Auto Restart

Units are equipped with an auto restart feature. If power is lost, the unit will automatically restart when power is restored. This feature is enabled/disabled using the controller's Tune Loop, see page 12.

## Section IV Operation

### Start Up

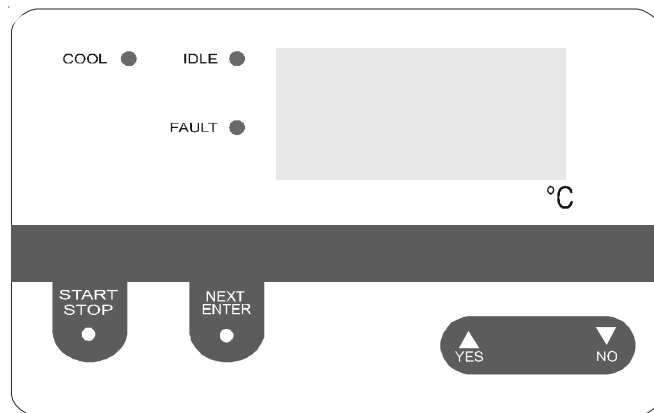
Before starting the unit, double check all electrical and plumbing connections and make sure the circulating system (the System III, your application, and the tubing that connects them) has been properly filled with cooling fluid.

Turn the RECIRCULATING FLOW CONTROL to “0”. Press START/STOP. The pump starts and the controller displays the reservoir fluid temperature.

The low fluid level monitor in the reservoir prevents the unit from operating if the fluid level in the reservoir is below the safe operating level. By slightly, and/or intermittently opening the RECIRCULATING FLOW CONTROL (toward “+”) and using extra cooling fluid to keep the reservoir topped off, the system can be filled without repeated tripping of the monitor.

If the unit shuts down, top off the reservoir and restart it. When the system is full, the reservoir level will no longer drop when the RECIRCULATING FLOW CONTROL valve is opened (toward “+”).

A control valve, located in the FACILITY WATER inlet line, regulates the flow rate of the cooling water supply as it enters the unit. The valve regulates the flow rate based on the heat load. Flow through the unit stops automatically when the unit is shut off.



Temperature Controller

To turn the unit off, press START/STOP. The recirculation pump will stop.

The IDLE and COOL lights indicate the control valve's status. When the temperature control valve is wide open (for maximum cooling), the COOL light is on steady. When the control valve is closed, the IDLE light is on. As the control valve moves between these extremes, the two lights flash with varying on-time to indicate the approximate position of the control valve.

## Temperature Controller

The microprocessor controller controls temperature using a PID (Proportional-Integral-Derivative) algorithm. It is designed with self-diagnostic features and easy to use operator interface.

### **NEXT ENTER**

Use this key to accept and save changes.

### **YES, ▲**

This key is used to increase numerical values.

### **NO, ▼**

This key is used to decrease numerical values.

When the controller is powered it displays the reservoir fluid temperature. Press the **NEXT ENTER** key to view the setpoint. The display flashes between **SP** and the actual setpoint number. If desired, use the **YES** and **NO** keys to change the setpoint. The display flashes as soon as either key is depressed. Once the desired setpoint is displayed, press **NEXT ENTER**.

When selecting an operating temperature, remember that the lowest achievable temperature is a function of the available flow rate, the temperature of the cooling water supply and the heat load.

The temperature control system actuates a control valve in the FACILITY WATER line. The control valve adjusts the flow of the cooling water supply to produce the desired operating temperature.

**NOTE:** The controller does not use the new value until the **NEXT ENTER** key is depressed and the display stops flashing. The controller will not allow you to enter a value above the maximum or below the minimum value, or any illegal value. If you try to enter an illegal value the display will revert to its original value when the last digit was entered.

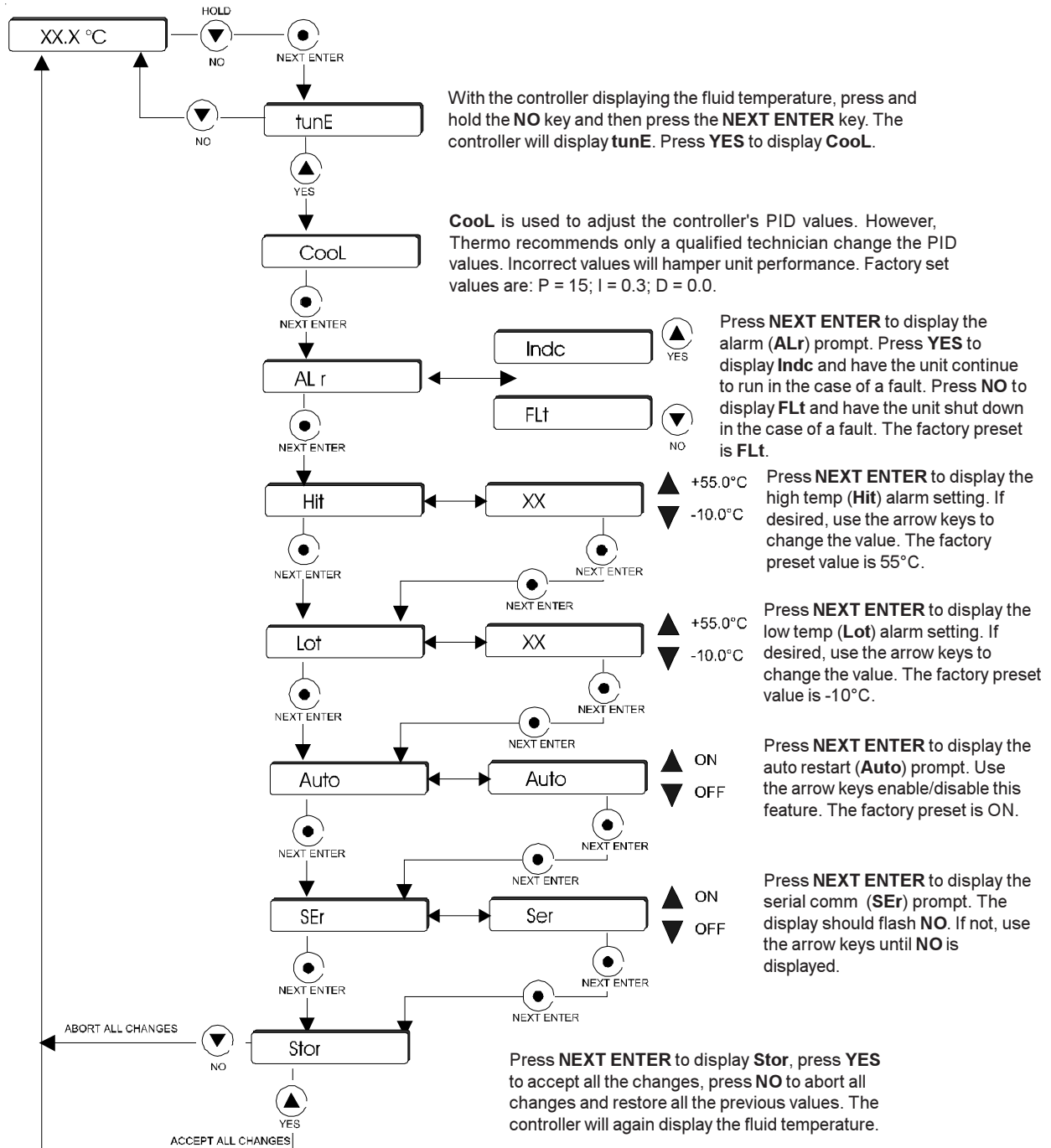
If the **NEXT ENTER** key is not depressed within one minute, the controller will time out and the new value will not be accepted. The controller will revert to the previous value.

**NOTE:** Error codes are addressed in Section VI, Troubleshooting.

## SetupLoop

The controller is used to tune the COOL PID values; configure the unit to continue to run (Indc) or shut down (FLt) in the event of a fault; set the high (Hit) and low (Lot) temperature limits; and enable/disable auto restart (Auto). If a temperature limit is exceeded the controller will display an error code, see Section VI.

**NOTE:** Serial Communication (SEr) is not operational. Ensure the display indicates OFF.



Setup Loop

## Section V Maintenance & Service



For personal safety and equipment reliability, the following procedure should only be performed by a qualified technician. Contact our Service Department for assistance (see Preface, After-sale Support).

### Service Contracts

Thermo offers on-site Service Contracts that are designed to provide extended life and minimal down-time for your unit. For more information, contact our Service Department (see Preface, After-sale Support).

### Facility Water Strainer

The facility water strainer is the user-installed basket strainer on the FACILITY WATER inlet. **NOTE:** The strainer is designed to be used only with water. Clean the strainer when it becomes visibly clogged or dirty.

Disconnect the power cord from the power source and turn off the facility cooling water.

Place a container under the strainer to collect any water that spills out of the basket when it is removed.

Unscrew the clear plastic basket. Remove the screen and rinse it with water. Replace the screen and the basket.

### Algae

To restrict the growth of algae in the reservoir, it is recommended that the reservoir cover be kept in place and that all circulation lines be opaque. This will eliminate the entrance of light which is required for the growth of most common algae.

We recommend the use of Chloramine-T, 1 gram per 3.7 liters.

### Configuration

The unit top is secured to the cabinet by four ball stud retainers; one at each corner. Remove cabinet top by prying upward gently (cover pops off) in order to perform the following adjustments.

In some cases, the side access panels may need to be removed. The access panels are secured using screws installed through the bottom of the cabinet.

## Voltage Selection

Remove the top cover from the cabinet.

The VOLTAGE SELECT toggle switch is located on the right side of the control box. Two ranges are available: 200-208V and 220-240V. Set the switch for the appropriate range.

Replace the top cover.

## Fault Interlock Contact

A set of contacts is connected to a receptacle on the control panel. The contacts are rated 10A/240V. This is not a power inlet or outlet. The receptacle is isolated from the circuitry. Its ground pin is connected to the chassis. The contacts are closed during normal operation and open when the unit is turned off or when a fault is detected.

## Fuses

The main fuses are 20 Amp RK5. The controller fuses are 1 Amp time delay. **Do not replace with an alternate amperage.**

### Single Phase Units

Remove the top cover from the cabinet.

The fuses are located on the right side of the control box.

### Three Phase Units

Remove the top cover, the right access panel and the control box cover.

The fuses are located inside the control box.

## Phase Rotation

Three phase units with three phase pump motors are equipped with a phase rotation interlock. If the phasing is wrong, the controller will display **PHEr** and the unit will not start.

Unplug the unit. Reverse any two power cord wires in the power cord plug.



**Never remove the green ground wire.**

Plug in the unit. The **PHEr** display should be off and the unit should start.

## Pump Motor Overload Protector

Three phase units with three phase pump motors have a pump motor overload protector.

The overload protector prevents the pump motor from exposure to excessively high current. If an overload fault occurs, due, for example, to a heavy work load, the controller will display **OL** and the unit will shut down. The overload protector will automatically reset after about two minutes. The unit must be manually restarted.

## Displaying Software Version

This procedure will display the software version number on the unit's display. In the event the unit is not operational, the software version (and the checksum) can also be read from the label which is on the microprocessor chip itself.

The following chart uses an example of software version 000550.93A

begin at the reservoir temperature display                    **20.3 ° C**

Press and hold NO for at least 10 seconds.                    **0550**

displays software version digits to **left** of decimal. Note the two leading zeros do not display.

Press NEXT    **93**

displays software version digits to **right** of decimal.

Press NEXT    **1**

displays software version revision letter (as its equivalent number - display cannot show letters. A=1, B=2, etc.)

Press NEXT    **0000**

displays checksum - this can be disregarded

Press NEXT    **20.3 ° C**

returns to reservoir temperature display



## Section VI Troubleshooting

### Error Codes

The controller also has the capability to display error codes.

#### Power up Errors

Power up errors are displays until any controller key is pressed. If the error message persists the problem is likely a keypad or controller board failure.

Display	Indication
Er 00	ROM checksum
Er 01	RAM check
Er 02	Keypad failure
Er 03	NOVRAM checksum error

#### Operating Errors

Operating errors are displays once and then clear after three seconds or when any controller key is pressed. If error messages Er04 - Er14 persist, the problem is likely controller board failure. If Er15 is displayed, ensure serial communications is turned off in the Setup Loop. If Er16 is displayed the unit needs calibration, contact us for assistance.

Display	Indication
Er 04 - 13	Interrupt error
Er 14	Synchronous error
Er 15	Asynchronous error
Er 16	Bad calibration

#### Latching Errors

In order to restart the unit when a latching error is displayed, the controller's START/STOP button must be pressed after the condition is cleared.

Display	Indication
Lo t	Fluid temperature lower than low temp alarm setting.
Hi t	Fluid temperature higher than high temp alarm setting.
Er 22	Fluid temperature higher than the high overrange point. This is a fixed value, factory set at 55°C.
Er 25	RDT1 input shorted.
Er 26	RTD1 input open.
LLF	Low level fault switch open for at least three seconds.
PHEr	Improper phasing.
OL	Pump motor overload.

If any other code appears contact Thermo customer service, see Preface.

## **Service Assistance**

If, after following these troubleshooting steps, your units fails to operate properly, contact our Service Department for assistance (see Preface, After-sale Support). Before calling please obtain the following information:

*Part number*

*Serial number*

*Voltage of unit*

*Voltage of power source*

*Software Version*

## **Technical Support**

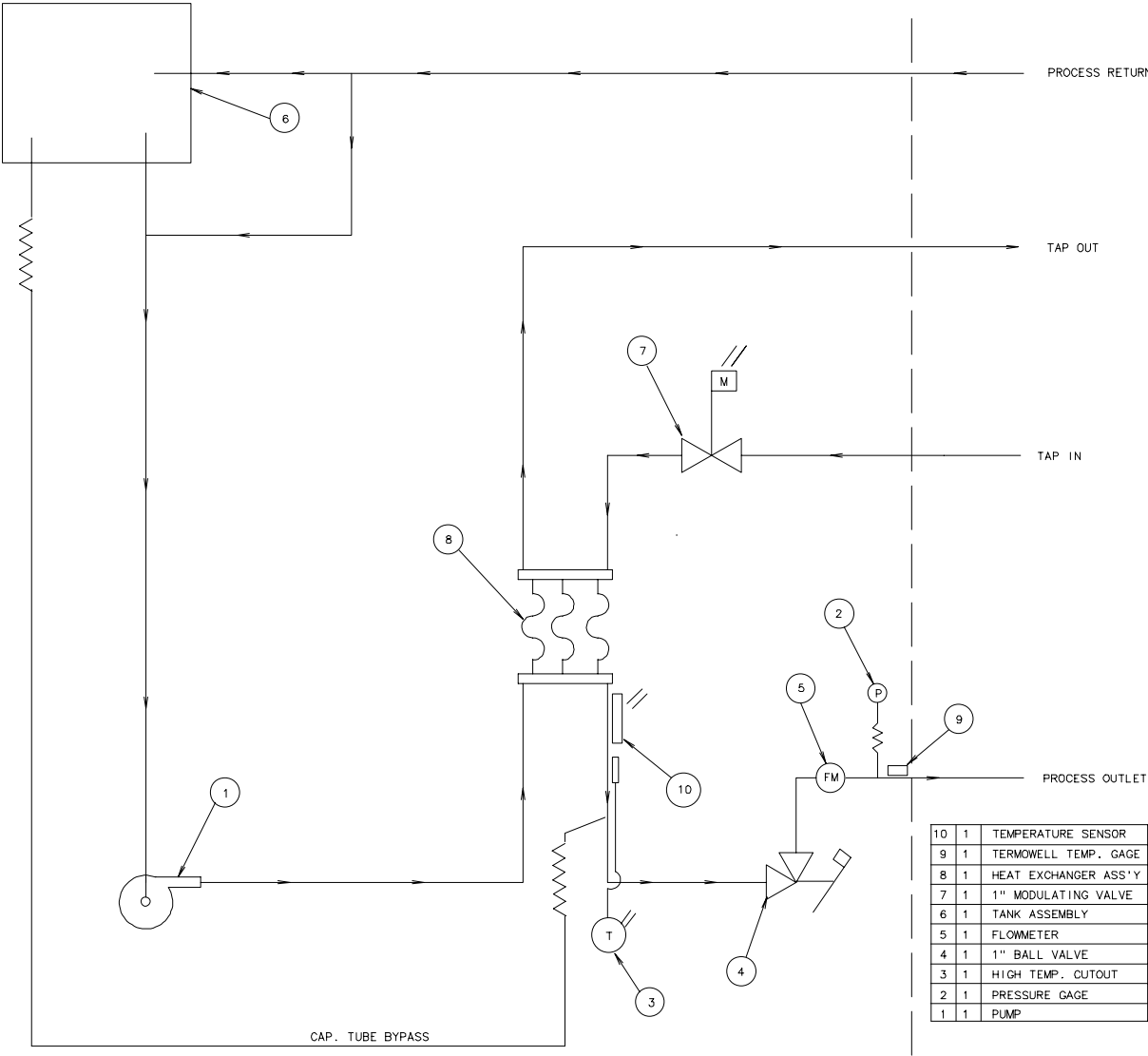
Our Service Department can provide you with a complete list of spare parts for your unit (see Preface, After-sale Support). Before calling, please obtain the following information:

*Part number*

*Serial number*

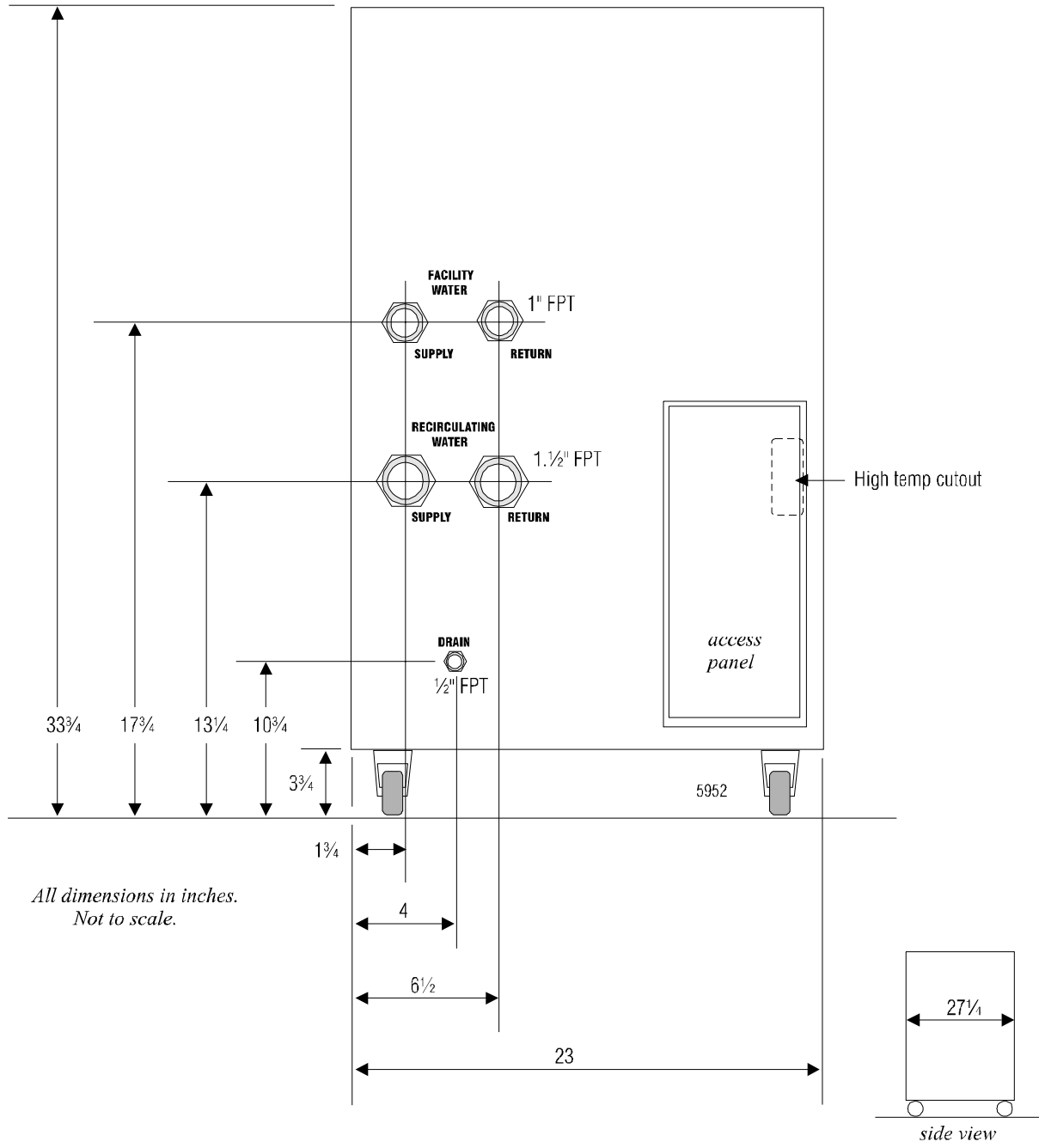
# Section VII Diagrams

## Flow Diagram



10	1	TEMPERATURE SENSOR
9	1	TERMOWELL TEMP. GAGE
8	1	HEAT EXCHANGER ASS'Y
7	1	1" MODULATING VALVE
6	1	TANK ASSEMBLY
5	1	FLOWMETER
4	1	1" BALL VALVE
3	1	HIGH TEMP. CUTOUT
2	1	PRESSURE GAGE
1	1	PUMP

# Rear View



# Appendix

## Water Quality Standards and Recommendations

	Permissible (PPM)	Desirable (PPM)
<b>Microbiologicals</b> (algae, bacteria, fungi)	0	0
<b>Inorganic Chemicals</b>		
Calcium	<40	<0.6
Chloride	250	<25
Copper	<1.3	<1.0
Iron	<0.3	<0.1
Lead	<0.015	0
Magnesium	<12	<0.1
Manganese	<0.05	<0.03
Nitrates/Nitrites	<10 as N	0
Potassium	<20	<0.3
Silicate	<25	<1.0
Sodium	<20	<0.3
Sulfate	<250	<50
Hardness	<17	<0.05
Total Dissolved Solids	<50	<10
<b>Other Parameters</b>		
pH	6.5-8.5	7-8
Resistivity	0.01*	0.05-0.1*
* Megohm-Cm (Compensated to 25°C)		

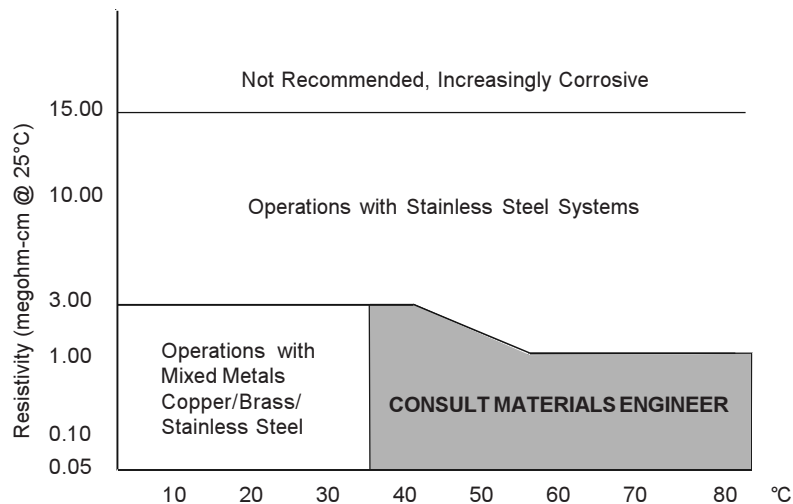
Unfavorably high total ionized solids (TIS) can accelerate the rate of galvanic corrosion. These contaminants can function as electrolytes which increase the potential for galvanic cell corrosion and lead to localized corrosion such as pitting. Eventually, the pitting could become so extensive that leaking will occur between the process water and facility water diminishing the System's heat transfer capability.

High water hardness (Calcium and Maganese) can also produce scaling. Scaling will inhibit heat transfer between the process and facility side by building up a deposit layer on metal surfaces. As an example, raw water in the United States averages 171 ppm (of NaCl). The recommended level for use in a water system is between 0.5 to 5.0 ppm (of NaCl).

Recommendation: Initially fill the tank with distilled/deionized water. Do not use untreated tap water as the total ionized solids level may be too high.

Maintain this water quality at a resistivity of between 1 to 10 megohm-cm (compensated to 25°C) by using a purification system. Although the initial fill may be as high as 10 megohm-cm (compensated to 25°C), the desired level for long time usage is 1 to 3 megohm-cm (compensated to 25°C).

The above two recommendations will reduce the electrolytic potential of the water and prevent or reduce the galvanic corrosion observed.



## WARRANTY

Thermo Electron Corporation warrants for 12 months from date of shipment any Thermo unit according to the following terms.

Any part of the unit manufactured or supplied by Thermo and found in the reasonable judgment of Thermo to be defective in material or workmanship will be repaired at an authorized Thermo Repair Depot without charge for parts or labor. The unit, including any defective part must be returned to an authorized Thermo Repair Depot within the warranty period. The expense of returning the unit to the authorized Thermo Repair Depot for warranty service will be paid for by the buyer. Thermo's responsibility in respect to warranty claims is limited to performing the required repairs or replacements, and no claim of breach of warranty shall be cause for cancellation or rescission of the contract of sales of any unit. With respect to units that qualify for field service repairs, Thermo's responsibility is limited to the component parts necessary for the repair and the labor that is required on site to perform the repair. Any travel labor or mileage charges are the financial responsibility of the buyer.

The buyer shall be responsible for any evaluation or warranty service call (including labor charges) if no defects are found with the Thermo product.

This warranty does not cover any unit that has been subject to misuse, neglect, or accident. This warranty does not apply to any damage to the unit that is the result of improper installation or maintenance, or to any unit that has been operated or maintained in any way contrary to the operating or maintenance instructions specified in Thermo's Instruction and Operation Manual. This warranty does not cover any unit that has been altered or modified so as to change its intended use.

In addition, this warranty does not extend to repairs made by the use of parts, accessories, or fluids which are either incompatible with the unit or adversely affect its operation, performance, or durability.

Thermo reserves the right to change or improve the design of any unit without assuming any obligation to modify any unit previously manufactured.

THE FOREGOING EXPRESS WARRANTY IS IN LIEU OF ALL OTHER WARRANTIES, EXPRESSED OR IMPLIED, INCLUDING BUT NOT LIMITED TO WARRANTIES OF MERCHANTABILITY AND FITNESS FOR A PARTICULAR PURPOSE.

Thermo's OBLIGATION UNDER THIS WARRANTY IS STRICTLY AND EXCLUSIVELY LIMITED TO THE REPAIR OR REPLACEMENT OF DEFECTIVE COMPONENT PARTS AND Thermo DOES NOT ASSUME OR AUTHORIZE ANYONE TO ASSUME FOR IT ANY OTHER OBLIGATION.

Thermo ASSUMES NO RESPONSIBILITY FOR INCIDENTAL, CONSEQUENTIAL, OR OTHER DAMAGES INCLUDING, BUT NOT LIMITED TO LOSS OR DAMAGE TO PROPERTY, LOSS OF PROFITS OR REVENUE, LOSS OF THE UNIT, LOSS OF TIME, OR INCONVENIENCE.

This warranty applies to units sold in the United States. Any units sold elsewhere are warranted by the affiliated marketing company of Thermo. This warranty and all matters arising pursuant to it shall be governed by the law of the State of New Hampshire, United States. All legal actions brought in relation hereto shall be filed in the appropriate state or federal courts in New Hampshire, unless waived by Thermo.